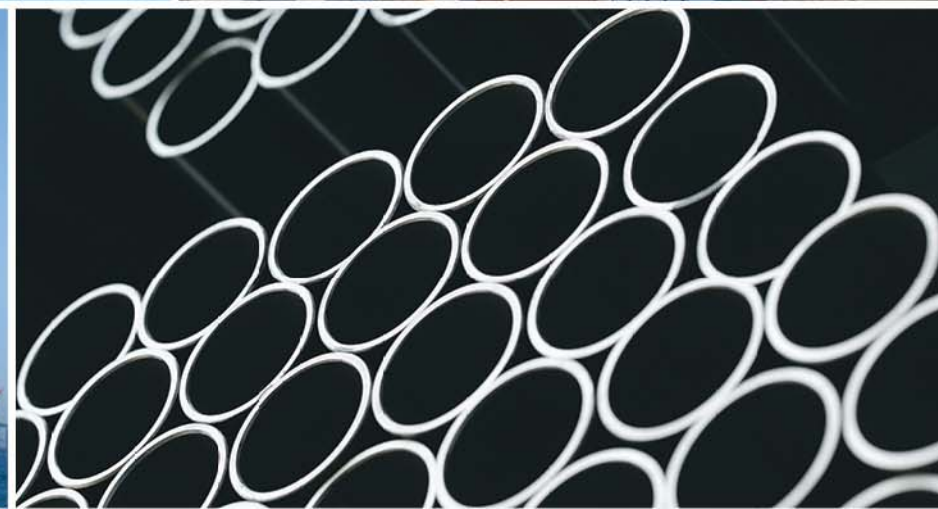
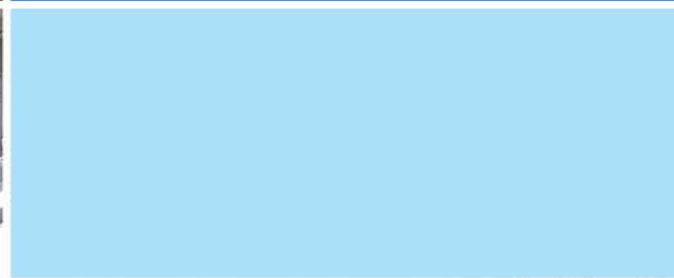




2023  
2022  
2021  
2020  
2019  
2018  
2017  
2016  
2015  
2014

CORPORATE PROFILE  
**kumkang** Kind



# KUMKANG KIND

---

The technological link between the world and its people, is Kumkang Kind's promise!

Kumkang Kind, a manufacturer of steel pipes and construction materials is writing a new page of history as not only a domestic market leader but also as the global leader of construction material manufacturer.

From the basic foundation of steel pipes to skyscrapers, underwater tunnels, the skeleton of formwork system, scaffolds and eco-friendly modular system, Kumkang Kind connects people and the world and creates better values with quality and skills.





# CONTENTS

---

02	KUMKANG KIND
04	WHO WE ARE
05	OUR VISION
06	OUR HISTORY
08	WHAT WE DO
16	WHERE WE OPERATE
18	HOW WE PERFORMED
24	PROJECT REFERENCES

# WHO WE ARE

## Korea Formwork Exporting No.1 !

Kumkang Kind as the manufacturer of steel pipes and construction materials has played an important role in the development of the Korean economy.

With the love and trust obtained from customers and those who are involved, Kumkang Kind has been giving back to the welfare of the society. Furthermore, Kumkang Kind with long years of experience will further expand its technology and quality.

Name of Company	<b>Kumkang Kind Co., Ltd</b>	
President	Beom Ho, Lee	
Capital	24 billion (KRW)	
Sales	613 billion (KRW)	
Employees	397 (2017) / Excluding Members of the Board	
HQ Address	110 (Dadae-dong), Dasan-ro, Saha-Gu, Busan, South Korea	
Seoul Office	Kumkang Kind Bldg, 16, Hyoryeong-ro, 16-gil, Seocho-Gu, Seoul, South Korea,	
	Eonyang	Steel Pipe, OCTG, Square Pipe
	Eumseong #1	Aluminum Formwork
	Eumseong #2	Aluminum Recycling & Extrusion
	Eumseong #3	Scaffolding
Factories	Changnyeong	LNGC, Scaffolding, Special and System Form, Modular System
	Jincheon #1	Aluminum Formwork, Gang Formwork
	Jincheon #2	Aluminum Formwork
	Nilai (Malaysia)	Aluminum Formwork



Sales

2017  
**KRW 613bn**

2016  
KRW 603bn



Export

2017  
**USD 100m**

2016  
USD 115m



Overseas  
Branches

Overseas Offices  
**6**

Overseas partners  
23 in 17 countries



Employees  
Worldwide

2017  
**800**

# OUR VISION

---

The basis of Kumkang Kind's technology is the commitment to our customers.

Kumkang Kind with vast field-experience and technological know-how is a professional in manufacturing steel pipes and construction materials. Putting customers first, Kumkang Kind with strict management system has constantly researched and developed the best product out in the market. Kumkang Kind will further work on training talented individuals, business ethics, and business knowledge. With this in mind, Kumkang Kind will advance towards the future and continuously remain as a trusting and well respected company.

Chairman.

A handwritten signature in white ink, appearing to read "Jang G. Ten". The signature is written in a cursive, flowing style.

# OUR HISTORY

As a professional manufacturer of construction materials and Steel Pipes, Kumkang Kind was established in 1979. Starting its overseas office in Malaysia in 2007, 2010 in the United States of America and in Vietnam, 2012 in India, 2017 in East Africa and in Indonesia. Kumkang Kind has achieved USD 100 Million in export and is accomplishing an eye opening development in and out of Korea.



1979. 08 Establishment of Kumkang Kind



1989. 06 Completion of Banwol Factory



1990. 01 Completion of Eonyang Factory



1992. 01 Completion of Busan Factory



2005. 11 Obtained Korea Industrial as subsidiary



2006. 12 Completion of EumSeong Factory

## 1979~1989

### Establishment of Kumkang Kind

As the manufacturer of steel pipes and formwork system Kumkang Kind continuously grew and publicly shared its shares on the Korean Stock Exchange Market in September 10th, 1988.

## 1990~1999

### Expansion of Domestic market

Kumkang Kind quickly expanded its production capacity and won the Prime Minister's Award for achieving USD 10 Million in exports.



2007. 09 Established KumKang Kind Malaysia



2009. 10 Completed Nilai Factory Malaysia



2010. 06 Establishment KumKang Kind Vietnam



2012. 10 Establishment KumKang Kind India



2014. 12 Achieved US 100 million in exports



2015. 03 Opened Changnyeong Factory



2017. 02 Establishment KumKang Kind East Africa



2017. 03 Establishment KumKang Kind Indonesia

## 2000~2009

## Challenge to become a Global Company

After obtaining KumKang Information System Co., Ltd and Evercos Co.,Ltd, KumKang Kind expanded its business in a various way. In 2007, KumKang Kind established KumKang Kind Malaysia and to further expand established its factory in Nilai, Malaysia in 2009.

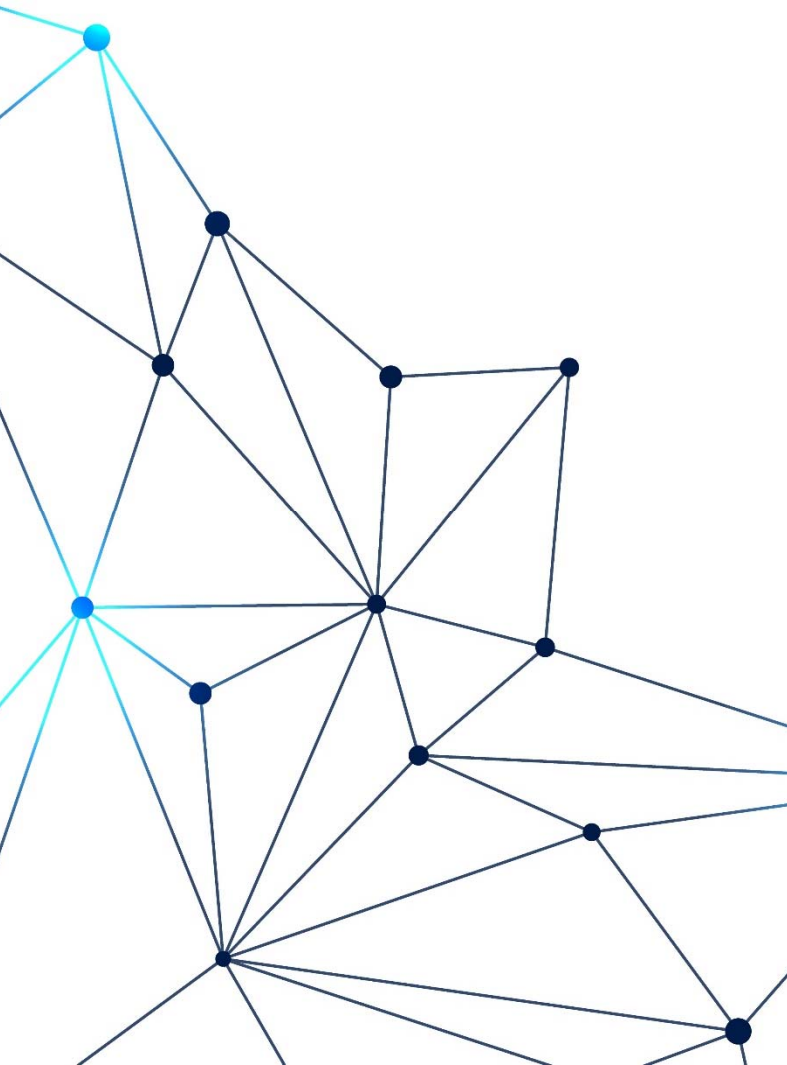
## 2010~Now

## Number 1 Exporter of Formwork

Continuous establishment of KumKang Kind overseas subsidiaries in the US, Vietnam, India, East Africa and in Indonesia, KumKang Kind achieved to be the first formwork system manufacturer to achieve US\$100 million in exports.

# WHAT WE DO

---



## FORMWORK SYSTEM



Provide the highest quality formwork solutions, we analyze the customer's needs precisely to choose the most efficient formwork system from complete product design optimized for site condition.

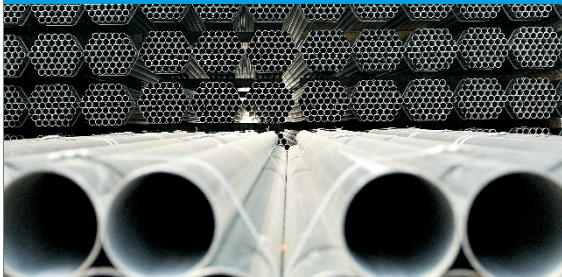
## Aluminum Recycling



From the melting process of the aluminum ingot and recycled aluminum to the extrusion process, we are making consistent efforts to create environment friendly value.



## STEEL PIPE



OCTG, ordinary and general structural purpose pipe which are produced with a diameter ranging from 1/2" to 8", are precisely formed, welded with high-frequency electric resistance and cooled by Kumkang Kind's advanced computerized system.

## SCAFFOLD & SHORING



With exhaustive field experience, we offer you best scaffold and shoring materials available on the market. In order to produce the most secure and reliable products, we are using high-strength steel material with special galvanizing method to reinforce its durability.

## MODULAR UNIT SYSTEM



By applying a standard method of design, Kumkang Kind produces an effective structural unit. 80% are finished at the factory and only 20% work will be done at site. Kumkang Kind is always pushing its limit to assemble the modular system, Faster and safer.

# FORMWORK SYSTEM

The most important aspect of a successful structural construction is the formwork system. Kumkang Kind will always offer you the most trustful, safe, and up-to-date formwork system technology available on the market. Kumkang Kind formwork system is based on worldwide field experience and accumulated technical know-hows. Whatever customers need, we will always fulfill their demands with the most appropriate system. With our R&D department continuously researching for newer and better products. We will maintain our position as the leader of formwork system against our competitors.





---

## Aluminum Formwork System

---

The most important aspect of a successful structural construction is the formwork system. Kumkang Kind will always offer you the most trustful, secure, efficient, and cutting edge of formwork system technology available on the market.



---

## Climbing System

---

Based on creative technology, we, Kumkang Kind, are doing our best to provide the optimal system to our customers. Kumkang Kind will create a new era of formwork system in the global market.



---

## Civil Engineering Formwork System

---

With stored technical background, Kumkang Kind is providing formwork engineering consulting service on apartment, multi-plex, bridgeworks, dams, and other storing facilities on both infrastructure and architectural structures.



---

## Gang Formwork System

---

Made of mild steel, working platform is attached to the formwork, which will increase jobsite workers' safety. Through the gang-form, the concrete finishing will be unbeatable while providing a safe working environment to workers and reduce construction period.

# ALUMINUM RECYCLING

Recycling is a core business operation in the aluminum formwork industry. Without billet, it is impossible to have extrusions which will directly affect the production and delivery of aluminum formwork. Thus, Kumkang Kind has newly invested in a billet casting facility in 2015. This facility allows Kumkang Kind to be self-sufficient and procure aluminum in either ingot or scrap form. Our new business will diversify our aluminum supply base and avoid any delays in delivery to our clients.



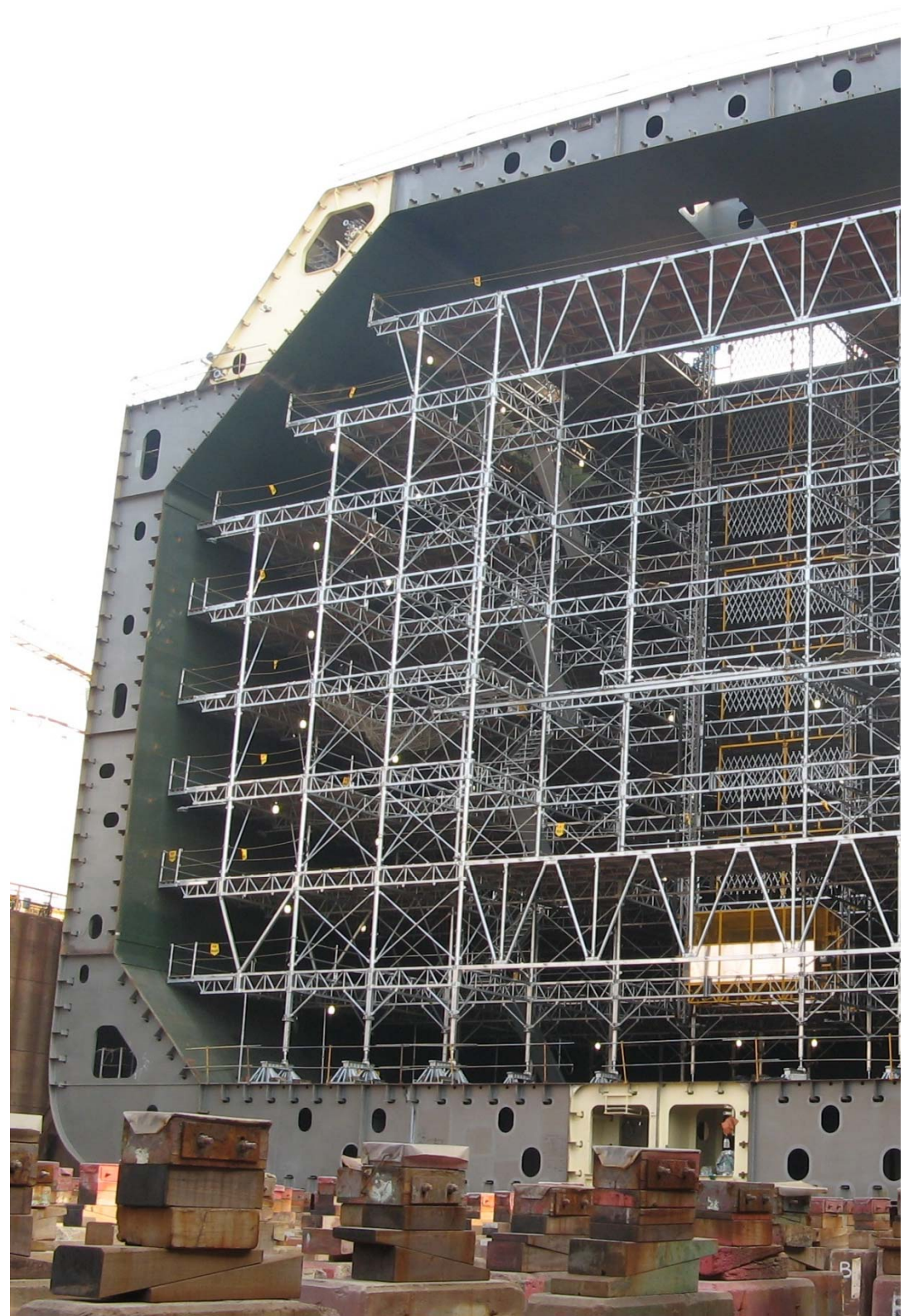
# STEEL PIPE

Kumkang Kind plays a key role in steel pipe industry to produce various types of pipes ; OCTG casing and tubing, line pipe, structural pipe, automobile and electric wiring. Furthermore, Kumkang Kind's steel pipes have been certified with KS, JIS, KR, Lloyd's Register, GL and various other international standards. Thus, Kumkang Kind is renowned for its impeccable quality in the steel pipe industry.



# SCAFFOLD & SHORING

Kumkang Kind's support and scaffolding products use high-strength steel materials with a special galvanizing method to reinforce its durability. Our scaffolding products are also used in the shipbuilding industry. They are used in building the inner part of the L.N.G.C. (liquefied natural gas carrier) and our products' efficiency is unbeatable.



# MODULAR UNIT SYSTEM

The Modular System is a technology where human and the nature coexists together. Our modular system is fast, economical, high quality, ecofriendly, flexible, diverse, and Safe. Kumkang Kind maximizes these benefits through the KMC construction method.



# WHERE WE OPERATE



- Kumkang Kind overseas' subsidiaries
- Overseas partners
- Production facilities

---

## Kumkang Kind East Africa

---

Office 15A, M2, The Mirage, Chiromo Rd  
Westlands, Nairobi, Kenya  
T.254-2-0250-0882  
kkafrica@kumkangkind.com

---

## Kumkang Kind Vietnam

---

9th, Beautiful Saigon Bldg., 02 Nguyen Khac  
Vien St, District 7, Ho Chi Mihn City, Vietnam  
T.84-8-5413-6508 F.84-8-5413-6507  
kkvietnam@kumkangkind.com

---

## Kumkang Kind India

---

Office no.105, 1st floor, Sky Vista BLDG, near  
Town Square Dorabjee, Viman Nagar, Pune -  
411 014  
Maharashtra India  
T.91-20-6647-3800  
kkindia@kumkangkind.com

---

## Kumkang Kind Indonesia

---

Gedung Wisma Sliipi Unit 801, Jl..Let. Jend.  
S. Parman Kav. 12 Jakarta, Indonesia  
T.62-812-9781-5600  
kkindonesia@kumkangkind.com

---

## Kumkang Kind Malaysia

---

B-9-01, Block B, Oasis Square No.2, Jalan PJU  
1A/7A Ara Damansara 47301 Petaling Jaya  
Selangor Darul Ehsan, Malaysia  
T.60-3-7831-0488 F.60-3-7831-2588  
kkmalaysia@kumkangkind.com

---

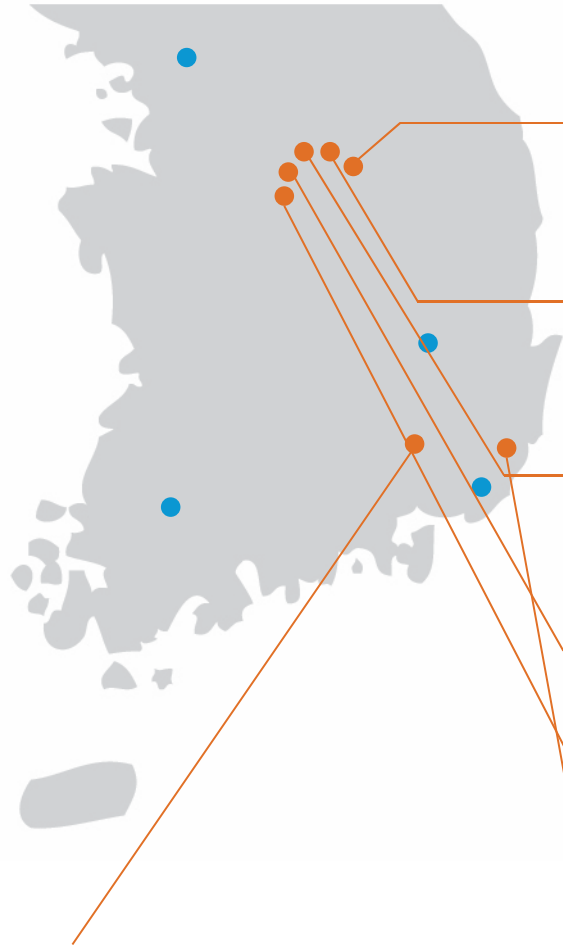
## Kumkang Kind America

---

1215 W. Imperial HWY., Ste 216 Brea,  
CA 92812 USA  
T.1-714-278-9089 F.1-714-494-8032



# Domestic



## ● Production facilities

### Eumseong #1 \_ Aluminum Formwork

505, Yonggwang-ro, Eumseong-eup, Eumseong-gun, Chungcheongbuk-do, Korea

### Eumseong #2 \_ Extrusion

369-843 Osaeng-ri Saenggeuk-myeon, Eumseong-gun, Chungcheongbuk-do, Korea

### Eumseong #3 \_ Scaffold

428-55, daedong-ro, Daeso-myeon, Eumseong-gun, Chungcheongbuk-do, Korea

### Jincheon #1 \_ Al-Form / Gang Form

48-1 Nowon-ri, Iwol-myun, Jincheon-gun, Chungcheongbuk-do, Korea

### Jincheon #2 \_ Aluminum Formwork

27-29, Sincheokseo-gil, Deoksan-myeon, Jincheon-gun, Chungcheongbuk-do, Korea

### Eonyang \_ API OCTG, Steel pipe

59, Bangudae-ro, Samnam-myun, Uljoo-gun, Ulsan, Korea

### Changnyeong \_ Special Formwork

Gwanggyemaoul-gil, Gyeseong-myeon, Changnyeong-gun, Gyeongsangnam-do, Korea

## ● Offices

### Seoul Office

Kumkangkind. Bldg, 1445-2, Seocho-dong, Seocho-ku, Seoul

### Gwangju Office

Office No.602, Solomon tower, 97, Cheomdannyeonsin-ro, Buk-gu, Gwangju, Korea

### Daegu Office

Office No.213, Taewang honors tower, 241, Palgong-ro, Dong-gu, Daegu, Korea

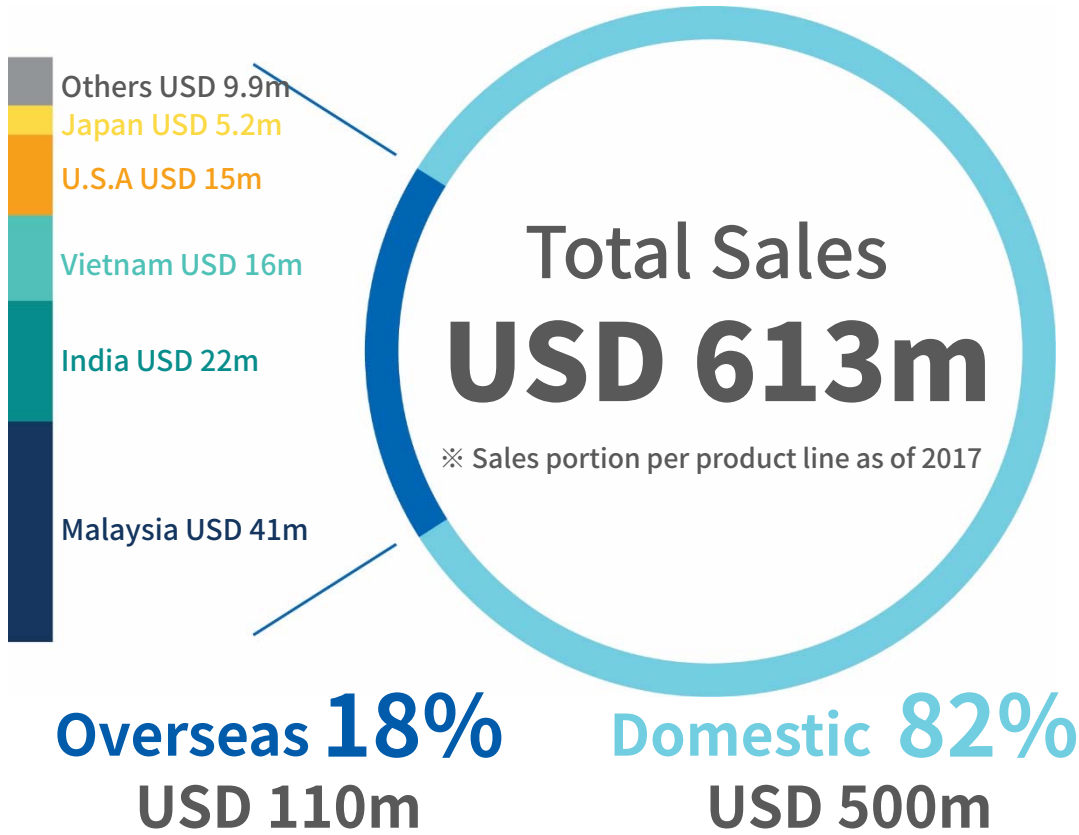
### Busan Office

8F, Nulwon Bldg., 134, Jaseong-ro, Dongbu-ro 24-gil, Dong-gu, Busan, Korea

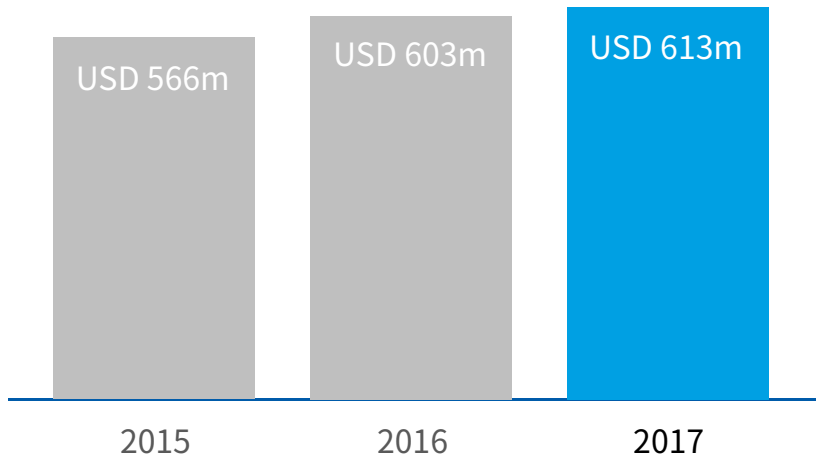
# HOW WE PERFORMED

Kumkang Kind operates all over the world, having its offices in United States, Malaysia, Vietnam, India, East Africa and Indonesia. Also, through our overseas partners and agents in Japan, China, Singapore, Middle East, North Africa and South America, we export our steel pipes, formwork, scaffolding and many other construction materials to over 30 different countries.

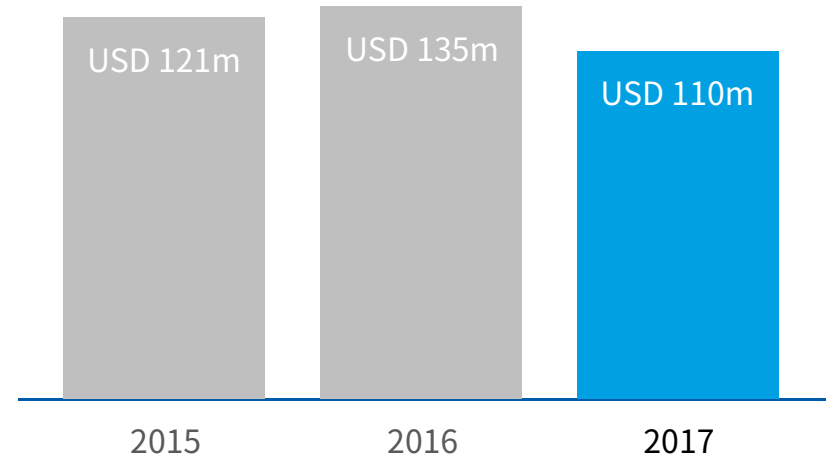
Kumkang Kind prepares to be a global leading company through continuous R & D and technological improvement. Kumkang Kind is committed to strengthening and expanding into new market and into new sector of business.



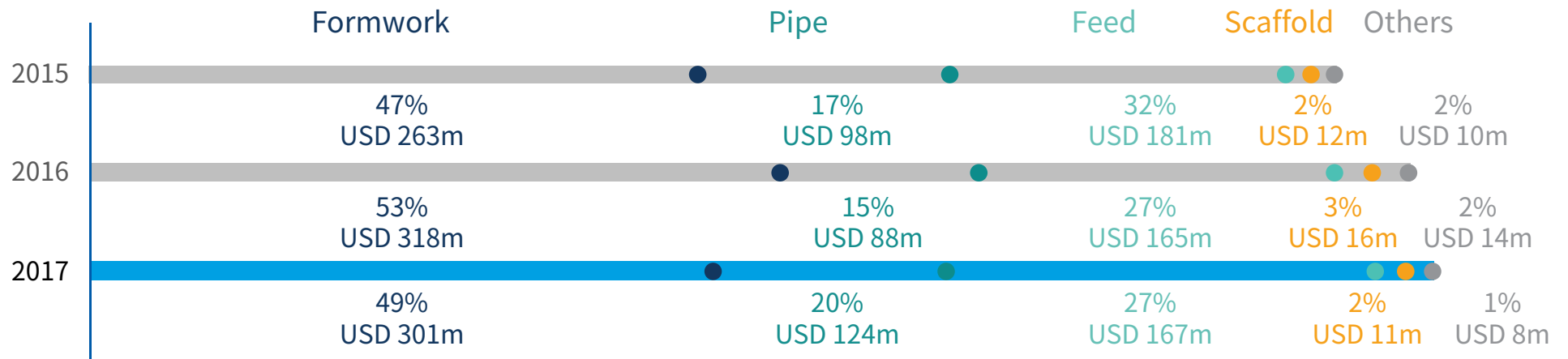
## Sales Figure



## Export Figure



## Sales by Item Ratio



## Summary of Consolidated Statement of Financial Position

Unit: Million KRW

Category		2015	2016	2017
Statement of Financial Position	Total Asset	678,341	710,806	756,422
	Liquid Asset	273,478	268,323	306,730
	Non-current Asset	404,862	442,483	449,692
	Total Liability	408,383	406,007	425,316
	Liquid Liability	363,345	338,435	389,646
	Non-current Liability	45,038	67,572	35,670
	Total Ownership Interest	269,958	304,798	331,106
	Paid in capital	24,870	24,870	24,870
	Retained Earning	245,088	279,929	306,236
Income Statement	Turnover	565,957	603,160	613,247
	Sales Cost	463,513	469,393	487,340
	Distribution & Maintenance Cost	70,208	77,439	79,932
	Profit	32,237	56,329	45,975
	Financial Profit and Loss	-8,663	-7,326	-7,404
	Other Profit and Loss	-3,372	1,087	961
	Income Tax Expenses	6,926	14,325	12,901
	Net Income	7,635	35,764	26,632

## Summary of Additional Statement of Financial Position

Unit: Million KRW

Category		2015	2016	2017
Statement of Financial Position	Total Asset	525,737	551,876	579,579
	Liquid Asset	186,275	177,636	206,556
	Non-current Asset	339,462	374,239	373,023
	Total Liability	315,347	313,697	332,871
	Liquid Liability	281,887	255,913	294,025
	Non-current Liability	33,460	57,785	28,847
	Total Ownership Interest	210,391	238,179	256,708
	Paid in capital	24,870	24,870	24,870
	Retained Earning	185,521	579,579	231,838
Income Statement	Turnover	353,372	414,981	436,404
	Sales Cost	291,362	324,553	347,716
	Distribution & Maintenance Cost	40,147	45,944	49,125
	Profit	21,863	44,484	39,564
	Financial Profit and Loss	-7,899	-6,955	-7,022
	Other Profit and Loss	1,873	697	-2,234
	Income Tax Expenses	4,550	10,062	8,723
	Net Income	11,287	28,165	21,585

## Major Affiliated Companies

Listing status	Number of companies	Company
Listed Company	2	Kumkang Kind Co., Ltd.
		Korea Industrial Co., Ltd.
Unlisted Company(Korea)	7	Dong Suh Chemical Co., Ltd.
		Kumkang Information System Co., Ltd.
		Busan Chungkwa Co., Ltd.
		D&A Co., Ltd.
		Agricultural Company Goryeo Co., Ltd.
		Joongwon Engineering Co., Ltd.
		Korea Capital Loan Co., Ltd.
Unlisted Company(Overseas)	9	KUMKANG KIND(M) SDN,BHD
		KUMKANG KIND U.S.A., INC
		KUMKANG KIND VIETNAM CO.,LTD.
		KUMKANG KIND INDIA PRIVATE LIMITED.
		KUMKANG KIND EAST AFRICA LIMITED
		PT.KUMKANG KIND ENGINEERING INDONESIA
		DONGSUH INDONESIA.PT
PT KRAKATAU POS-CHEM DONG-SUH CHEMICAL		

Unit: Thousand KRW

Company	Business	Location	Sales
Kumkang Information System Co., Ltd.	Software development	Republic of Korea	1,262,000
KUMKANG KIND (M) SDN. BHD	Manufacturing Aluminum formwork, Sales and Rent	Malaysia	40,921,877
KUMKANG KIND U.S.A., INC	Sales of Steel Pipe	United States of America	10,014,921
KUMKANG KIND (VIETNAM) CO., LTD	Aluminum formwork Sales	Vietnam	5,239,842
KUMKANG KIND INDIA PRIVATE LIMITED	Aluminum formwork Sales	India	2,218,507
Korea Industrial Co., Ltd.	Assorted Feed Production Sales	Republic of Korea	167,855,863
D&A Co., Ltd.	Gene Analysis	Republic of Korea	319,640
Agricultural Company Goryeo Co., Ltd.	Meat Processing	Republic of Korea	221,963
Korea Capital Loan Co., Ltd.	Other Credit Financial Business	Republic of Korea	92,443
Busan Chungkwa Co., Ltd.	Agricultural Products Sales on Consignment Basis	Republic of Korea	6,658,549

# PROJECT REFERENCES

---



Royal Atlantis  
(Dubai, U.A.E.)



The Palm Gateway  
(Dubai, U.A.E.)



# PROJECT REFERENCES

Colombo City Centre  
(Sri Lanka)



Capitol Twinpeaks  
(Sri Lanka)



Insha Affordable Housing  
Development  
(Doha, Qatar)



# PROJECT REFERENCES



Jabercauseway  
(Kuwait)

SP 5JJ  
(Dubai, U.A.E.)

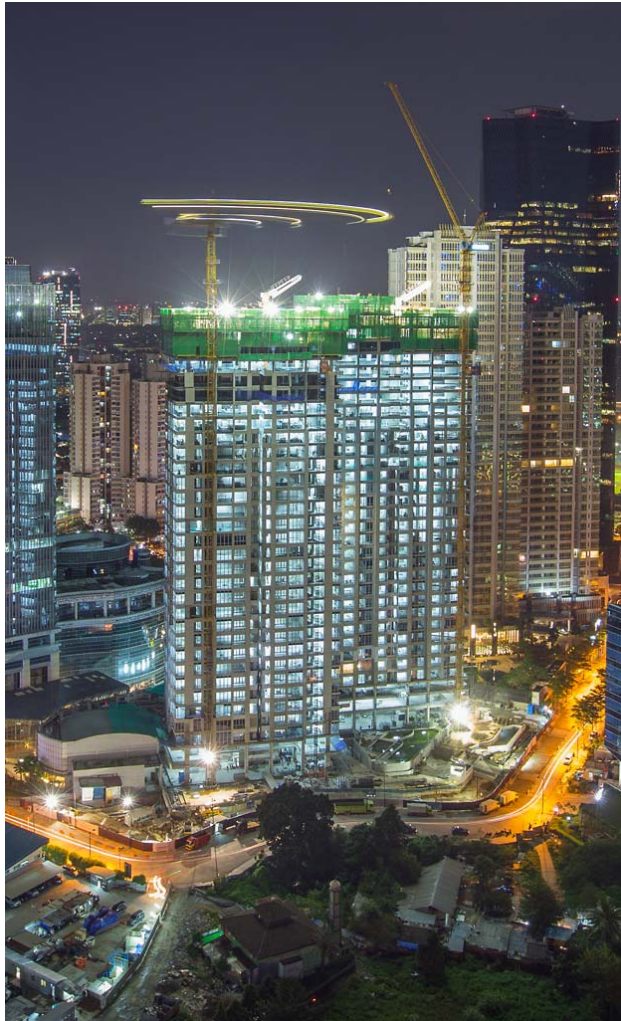


W  
(Republic of Korea)



# PROJECT REFERENCES

---



The Elements  
(Indonesia)



Napa Valley  
(India)



Geoga Grand Bridge  
(Republic of Korea)

# PROJECT REFERENCES

---



Marina Bay Financial Center R2  
(Singapore)

80 logements LPA  
(Algeria)



# PROJECT REFERENCES



Admir Residential  
(Lebanon)

Oasis Damansara  
(Malaysia)

Hanoi Landmark Tower  
(Vietnam)



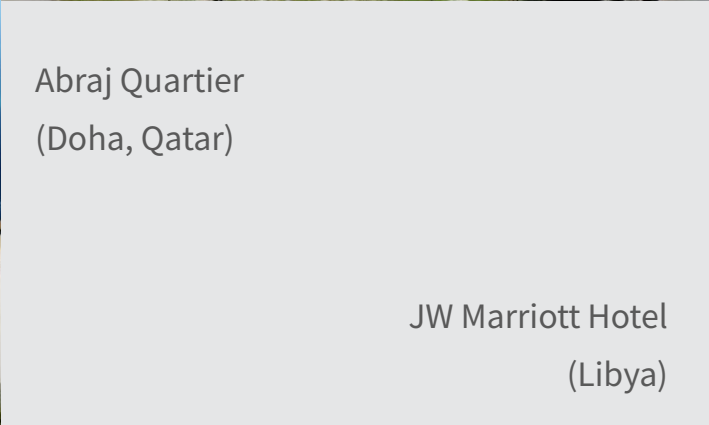
# PROJECT REFERENCES



Gurney Paragon  
(Malaysia)



Abraj Quartier  
(Doha, Qatar)



JW Marriott Hotel  
(Libya)



# PROJECT REFERENCES



Kumho Asiana Plaza  
(Vietnam)



KLCC Tower  
(Malaysia)



Unity Gardens  
(Kenya)



Tsubaki Hotel Guam  
(Guam)

Thank you

